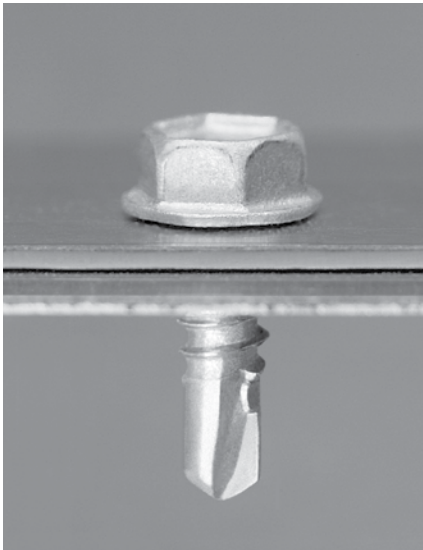


# TEKS<sup>®</sup> Self-Drilling Fasteners

*Preferred Most  
by Electrical,  
Decking, HVAC  
and Metal  
Building  
Contractors*



## DESCRIPTION/ADVANTAGES

### Light Duty Steel-To-Steel Applications—



- Sharp convex drill point has precise cutting edges to improve drill performance with less effort.
- Non-walking point provides fast material engagement.
- Unique point to thread design extrudes the metal preventing stripout.
- Point to thread design maximizes pullout performance and minimizes backout.
- Three head styles available to handle various applications.
- Climaseal<sup>®</sup> finish provides excellent corrosion resistance

## SPECIFICATIONS

**Diameter /** 8-18  
**Thread Form** 10-16

### Head Styles



Hex Washer Head  
(HWH)



Socket Pan Head  
(SP)



Modified Truss Head  
(MTH)

### Drill Point

Teks 2



Teks 3



### Finish

#### Type

Electro-zinc (EZ)  
Climaseal<sup>®</sup> Coating (CL)  
Climaseal<sup>®</sup>+ Coating (CL+)

#### Kesternich Results (DIN 50018, 2.0L)

3 cycles - 5% or less red rust  
30 cycles - 10% or less red rust

#### Salt Spray Results (ASTM B117)

48 hours - 5% or less red rust  
1000 hours - 10% or less red rust

Meets or exceeds Kesternich and Salt Spray Results of Climaseal<sup>®</sup> Coating (CL)

## INSTALLATION INSTRUCTIONS

1. A standard screwgun with a depth sensitive nosepiece should be used to install Tekes. For optimal fastener performance, the screwgun should be a minimum of 4 amps and have a RPM range of 0-2000.
2. Adjust the screwgun nosepiece to properly seat the fastener.
3. New magnetic sockets must be correctly set before use. Remove chip build-up as needed.
4. The fastener is fully seated when the head is flush with the work surface.
5. Overdriving may result in torsional failure of the fastener or stripout of the substrate.
6. The fastener must penetrate beyond the metal structure a minimum of 3 pitches of thread.

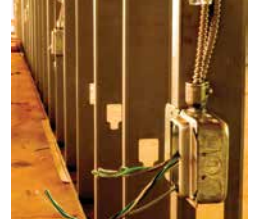
# TEKS Light Duty Steel-To-Steel Applications

## APPLICATIONS

- Stitch roof deck and wall panel sidelaps.
- HVAC, electrical trim accessories to steel framing.
- Residential steel frame construction.
- Brick ties to steel framing.
- Track to stud and stud splicing.
- Hat channel to stud.

## APPROVALS/LISTINGS

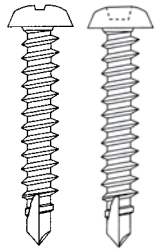
Factory Mutual (J.I. 2 X 9A2 AM)  
ICC - ESR 1976



## SELECTION CHART

### TEKS® Fasteners

Finish: Electro-Zinc Plating.

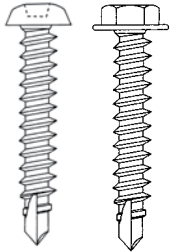


PART NUMBER	REFERENCE NUMBER	DESCRIPTION	HEAD STYLE	DRILL POINT	DRILL & TAP CAPACITY	MAX. MATERIAL ATTACHMENTS	BOX QTY	"P/A" PAK QTY	"X" PAK QTY	APPLICATIONS
2240 <sup>x</sup>	2240 <sup>x</sup>	8-18 x 1/2"	#2 SP	#2	.036-.100	.205	10,000		1,000	<ul style="list-style-type: none"> <li>- HVAC, electrical trim accessories to steel framing</li> <li>- Residential steel frame construction</li> <li>- Track to stud</li> <li>- Hat channel to stud</li> <li>- Stud splicing</li> </ul>
2250	2250	8-18 x 1/2"	MTH	#2	.036-.100	.205	10,000			
2280 <sup>x</sup>	2280 <sup>x</sup>	8-18 x 5/8"	#2 SP	#2	.036-.100	.330	10,000		1,000	
2330 <sup>x</sup>	2330 <sup>x</sup>	8-18 x 3/4"	#2 SP	#2	.036-.100	.455	10,000		1,000	
2360 <sup>x</sup>	2360 <sup>x</sup> A	8-18 x 1"	#2 SP	#2	.036-.100	.705	8,000		500	
2220 <sup>x</sup>	2220 <sup>p</sup> x	8-18 x 1/2"	1/4" HWH	#2	.036-.100	.205	10,000		1,000	
2310 <sup>x</sup>	2310 <sup>x</sup> A	8-18 x 3/4"	1/4" HWH	#2	.036-.100	.455	10,000		1,000	
2365	2365 <sup>A</sup>	8-18 x 1"	1/4" HWH	#2	.036-.100	.705	8,000			

<sup>p</sup> Available in P/A PAK    <sup>x</sup> Available in X PAK

### TEKS® Fasteners

Finish: Electro-Zinc Plating.

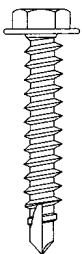


PART NUMBER	REFERENCE NUMBER	DESCRIPTION	HEAD STYLE	DRILL POINT	DRILL & TAP CAPACITY	MAX. MATERIAL ATTACHMENTS	BOX QTY	"P/A" PAK QTY	"X" PAK QTY	APPLICATIONS
2480 <sup>x</sup>	2480 <sup>x</sup>	10-16 x 3/4"	#2 SP	#3	.036-.175	.325	6,000		500	<ul style="list-style-type: none"> <li>- Clips, duct straps, brick ties or accessories to steel framing</li> </ul>
2490 <sup>x</sup>	2490 <sup>x</sup>	10-16 x 1"	#2 SP	#3	.036-.175	.575	5,000		500	
2495 <sup>x</sup>	2495 <sup>x</sup>	10-16 x 1-1/4"	#2 SP	#3	.036-.175	.825	4,000		250	
2400 <sup>x</sup>	2400 <sup>x</sup>	10-16 x 1/2"	5/16" HWH	#3	.036-.175	.150	6,000		1,000	
2460 <sup>p</sup> x	2460 <sup>p</sup> x	10-16 x 3/4"	5/16" HWH	#3	.036-.175	.325	6,000	100	500	
2510 <sup>A</sup> x	2510 <sup>A</sup> x	10-16 x 1"	5/16" HWH	#3	.036-.175	.575	5,000	100	500	

<sup>p</sup> Available in P/A PAK    <sup>x</sup> Available in X PAK

### TEKS® Fasteners

Finish: Climaseal Coating.



PART NUMBER	REFERENCE NUMBER	DESCRIPTION	HEAD STYLE	DRILL POINT	DRILL & TAP CAPACITY	MAX. MATERIAL ATTACHMENTS	BOX QTY	APPLICATIONS
1100 +	1128000	10-16 x 3/4"	5/16" HWH	#3	.036-.175	.325	5,000	<ul style="list-style-type: none"> <li>- Clips, duct straps, brick ties or accessories to steel framing</li> </ul>
1131000 +	1131000	10-16 x 1-1/2"	5/16" HWH	#3	.036-.175	.1075	3,000	
2220CL	2220CL	8-18 X 1/2"	1/4" HWH	#2	.036-.100	.205	10,000	

+ (CL+) Coating

## PERFORMANCE TABLES

### Sheet Steel Gauges

GAUGE NO.	12	14	16	18	20	22	24	26
Nominal Decimal Equivalent (Inch)	.105	.075	.060	.048	.036	.030	.024	.018

### Pullout Values (Average Lbs. Ultimate)

FASTENER		STEEL GAUGE (Lbs.)							
DIA.	PT	26	24	22	20	18	16	14	12
#8	2	119	193	265	298	491	703	959	-----
#10-16	1	148	241	311	357	565	826	1111	1796
	3	124	208	266	299	499	708	967	1474
1/4	1	208	329	428	562	800	1151	-----	-----

### Shear Values (Average Lbs. Ultimate)

FASTENER		STEEL GAUGE (Lapped)						
DIA.	PT	26	24	22	20	18	16	14
#8	2	294	496	560	740	1060	-----	-----
#10	1	398	584	659	884	1374	-----	-----
	3	-----	455	526	728	1266	1540	1552
1/4	1	511	849	885	1244	1764	-----	-----

### Fastener Values

FASTENER (Dia-tpi)	TENSILE (Lbs. Min)	SHEAR (Avg. Lbs. Ultimate)	TORQUE (Min. in Lbs.)
8-18	1545	1000	42
10-16	1936	1400	61
10-24	2702	1500	65
12-14	2778	2000	92

The values listed are ultimate averages achieved under laboratory conditions and apply to Buildex manufactured fasteners only. Appropriate safety factors should be applied to these values for design purposes.