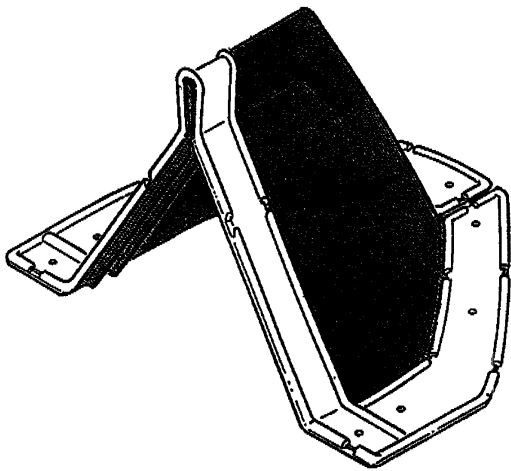


DEK-CAP™ Flashing

*The Only Universal
End Cap Flashing
For Standing
Seam Roof*



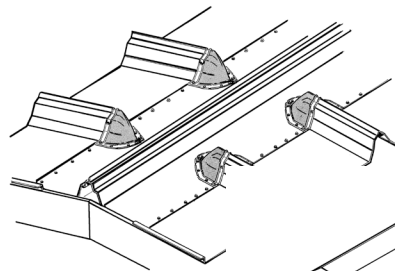
DESCRIPTION/ADVANTAGES

Metal Roof End Cap Flashing Application—

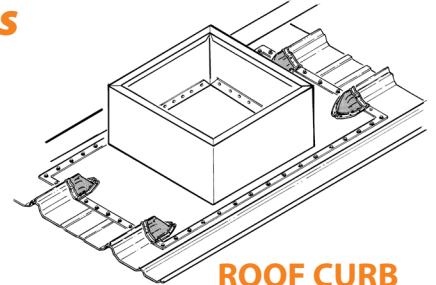
- Universal design allows use on left and right handed seams.
- Flexible, corrosion resistant aluminum base conforms to the majority of standing seam roof panels.
- Pre-formed panel profile shape is designed to reduce installation time.
- Fastening locations are clearly indicated for accurate installation.
- Dual underside ridges provide maximum sealing protection.
- Thermal elastomer material provides excellent resistance to ozone, ultra-violet light and extreme temperatures.
- Thermal elastomer has a continuous temperature of -40°C to 121°C.
- Expansion notch provides added installation flexibility.
- Interior panel stop ensures correct installation position.

Different Applications

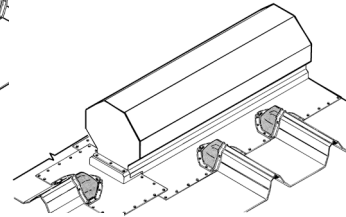
RIDGE CAP



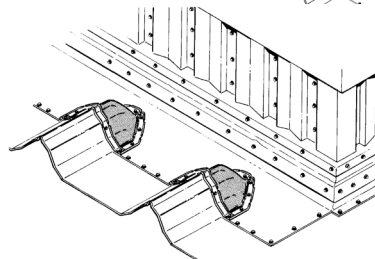
ROOF CURB



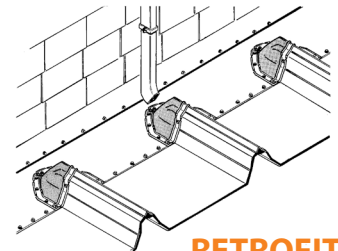
RIDGE VENT



WALL TO ROOF

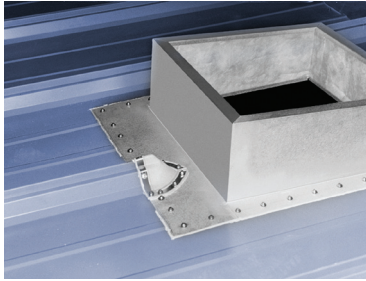


RETROFIT



DEK-CAP™ Standing Seam Roof End Cap Flashing

APPLICATIONS



Ridge Cap
Roof Curb
Ridge Vent
Wall to Roof
Retrofit

SPECIFICATIONS

Material Thermal Elastomer
Width 7-1/4"
Length 5-3/4"
Height 3-5/16"
Color Gray

SELECTION CHART

Dek-Cap Flashing

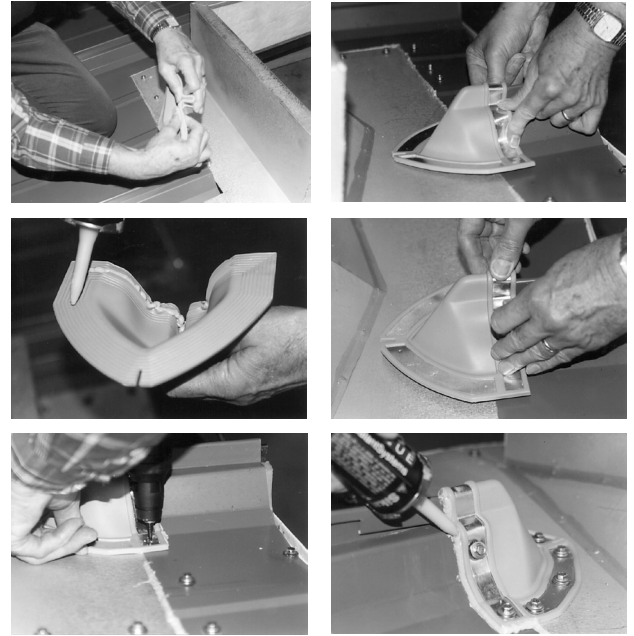
| PART NUMBER | REFERENCE NUMBER | DESCRIPTION | APPLICATION | BOX QTY |
|-------------|------------------|-------------|--|---------|
| 4146910 | 4146910 | Dek-Cap | Metal Curbs, Skylights, Ridge Applications, Jobsite Retrofit | 10 |

PERFORMANCE TABLE

Dek-Cap Flashing

| ASTM METHOD | TEST DESCRIPTION | SPECIFICATION | TEST RESULTS |
|-------------|------------------------------------|-----------------|--------------|
| D412 | Tensile Strength (min. psi rating) | 1450 psi min. | 1500 psi |
| D412 | Ultimate Elongation (%) | 350 min. | 450 |
| D1171 | Resistance to Ozone-min. rating | 100 (no cracks) | Passed |
| D573 | Heat Aging - 70 hrs. at 100°C | | |
| | • Change in Hardness (points) | ± 15 max. | +3 |
| | • Change in Tensile Strength (%) | ± 30 max. | +2 |
| | • Change in Elongation (%) | ± 50 max. | -3 |

INSTALLATION INSTRUCTIONS



1. Bend top so that both sides are parallel to metal roof.
2. Press Dek-Cap edges into contours of panel configuration.
3. Remove and apply sealant on underside of flexible aluminum edging.
4. Slide Dek-Cap flashing over panel profile.
5. Follow indicated fastening pattern to attach Dek-Cap to surface with Buildex Scots self-drilling fasteners.
6. Apply additional sealant around base if desired.

| ASTM METHOD | TEST DESCRIPTION | SPECIFICATION | TEST RESULTS |
|-------------|---|------------------------------|--------------|
| D2137 | Low Temperature Brittleness-3 mins. at -40°C | Non-brittle | Passed |
| D624 | Tear Resistance Die C (min.) per inch of width min. | 125 pounds per inch of width | Passed |